

Product Description: Hemp CBD Tincture 1000mg/30mL OFCO, OCO2, OLEM, OTRPS

Invoice Number: 2021-75A

Lot Number: T-06821-B4

Manufacture Date: Mar 09, 2021

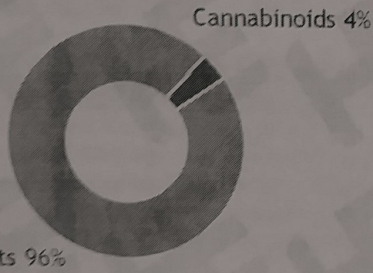
Product Code: T-1000-OCO2-OFCO-OLEM-OTRPS-30

Date of Analysis: Mar 10, 2021

Best By Date: Sep 09, 2022

**Cannabinoid Potency - Expected CBD: 33.33 mg/mL ± 10%**

% Total Cannabinoids



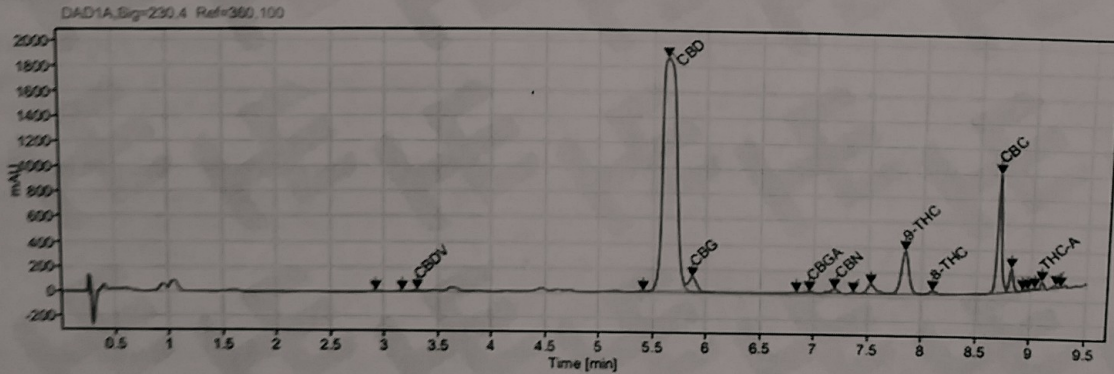
|            | mg/mL       | %      | LOQ (mg/mL) |
|------------|-------------|--------|-------------|
| Total CBD: | 35.45 mg/mL | 3.55 % | 0.05 mg/mL  |
| CBD:       | 35.45 mg/mL | 3.55 % | 0.05 mg/mL  |
| CBDa:      | ND          | ND     | 0.05 mg/mL  |
| d9-THC:    | 1.74 mg/mL  | 0.17 % | 0.05 mg/mL  |
| CBC:       | 1.27 mg/mL  | 0.13 % | 0.05 mg/mL  |
| CBG:       | 0.61 mg/mL  | 0.06 % | 0.05 mg/mL  |
| CBGa:      | <LOQ        | <LOQ   | 0.05 mg/mL  |
| CBN:       | 0.07 mg/mL  | 0.01 % | 0.05 mg/mL  |
| CBDV:      | 0.06 mg/mL  | 0.01 % | 0.05 mg/mL  |
| d8-THC:    | 0.13 mg/mL  | 0.01 % | 0.05 mg/mL  |
| THCa:      | 0.05 mg/mL  | 0.01 % | 0.05 mg/mL  |

Density: 0.949 (kg/m<sup>3</sup>)

Specific Gravity: 0.952

\*Total d9-THC and CBD are calculated taking into account the loss of a carboxyl group during decarboxylation.  
The formulas are as follows: d9-THC = d9THC + (THCa \* 0.877)    CBD = CBD + (CBDa \* 0.877)  
\*\*Any compounds with results listed as "ND" were not detected during analysis.  
\*\*\*LOQ is the limit of quantitation for any given analyte.

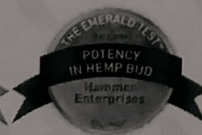
**Chromatogram**



Prepared By: S. Scarabosio  
Analytical Lab Manager  
Mar 11, 2021

Reviewed By: B. Estes  
QA/QC Analyst  
Mar 11, 2021

Analyzed via HPLC Under These Conditions: Humidity: 26% Temperature: 72.0 °F



ISO 9001:2015 Certificate Number: US4293

Certificate of Analysis test results are based only on the analysis of the product listed in the "Product Description" of this form. Hammer Enterprises, LLC, makes no claims as to the efficacy, safety, or other risks associated with any detected or non-detected compounds reported herein. All analyses conducted at Hammer Enterprises, LLC, is performed on well-maintained, quality instruments utilizing Good Laboratory Practices and validated methodology. This Certificate may not be reproduced except in full, without the written approval of Hammer Enterprises, LLC. **DISCLAIMER:** When reviewing certificate ensure watermark is complete and intact. Watermark will present as repeating HE logos diagonally across the entire page. The authenticity of this document is not guaranteed if there is evident modification, blocking, or alterations of the watermark.