

Product Description: Hemp CBD Tincture - 1000mg/30mL, CO2, MCT Vanilla

Invoice Number: 2019-1444C

Lot Number: T-34019-B8

Best By Date: Dec 05, 2020

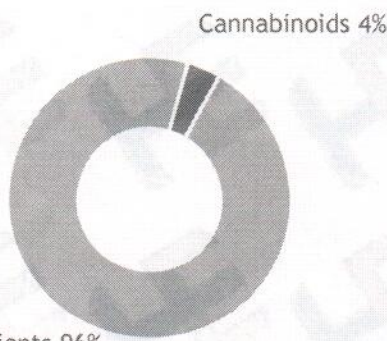
Product Code: T-1000-CO2-MCT-VA-30ml

Date of Analysis: Dec 09, 2019

Manufacture Date: Dec 06, 2019

Cannabinoid Potency - Expected CBD: 33.33 mg/mL ± 10%

% Total Cannabinoids



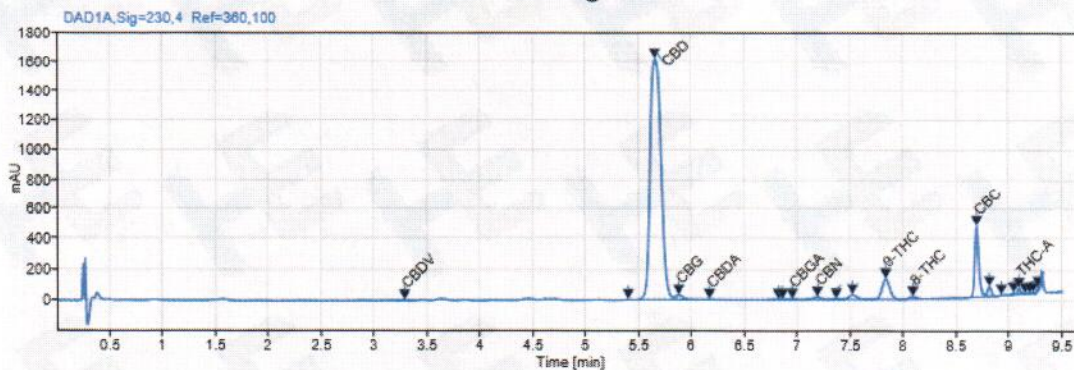
	mg/mL	%
Total CBD:	34.68 mg/mL	3.47 %
CBD:	34.67 mg/mL	3.47 %
CBDa:	<0.05 mg/mL	<0.01 %
d9-THC:	1.52 mg/mL	0.15 %
CBC:	1.29 mg/mL	0.13 %
CBG:	0.35 mg/mL	0.04 %
CBGa:	<0.05 mg/mL	<0.01 %
CBN:	0.07 mg/mL	0.01 %
CBDV:	<0.05 mg/mL	<0.01 %
d8-THC:	0.18 mg/mL	0.02 %
THCa:	<0.05 mg/mL	<0.01 %

*Total d9-THC and CBD are calculated taking into account the loss of a carboxyl group during decarboxylation.
The formulas are as follows : d9-THC = d9THC + (THCa * (0.877)) CBD = CBD + (CBDa * (0.877))
**Any compounds with results listed as "ND" were not detected during analysis.

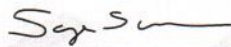
Density: 0.852 (kg/m³)

Specific Gravity: 0.855

Chromatogram



Approved By: S. Scarabosio
Analytical Laboratory Manager
Dec 10, 2019



Analyzed via HPLC Under These Conditions: Humidity: 25% Temperature: 72.0°F



ISO 9001:2015 Certificate Number: US4293

Certificate of Analysis test results are based only on the analysis of the product listed in the "Product Description" of this form. Hammer Enterprises, LLC, makes no claims as to the efficacy, safety, or other risks associated with any detected or non-detected compounds reported herein. All analyses conducted at Hammer Enterprises, LLC, is performed on well-maintained, quality instruments utilizing Good Laboratory Practices and validated methodology. This Certificate may not be reproduced except in full, without the written approval of Hammer Enterprises, LLC. **DISCLAIMER:** When reviewing certificate ensure watermark is complete and intact. Watermark will present as repeating HE logos diagonally across the entire page. The authenticity of this document is not guaranteed if there is evident modification, blocking, or alterations of the watermark.



Product Specification Sheet:
MCT Tincture, Bottled
Full-Spectrum, Vanilla Flavored

Document #:
PSS-T-FSO-MCT-VAN-30mL
Version: 1.3
Issue Date: 11/01/2019
Supersedes: 09/16/2019

30616 Bryant Drive
Evergreen, CO 80439

Product Code:
T-1000-CO2-MCT-VA-30ml

Completed By: SS
Invoice #: 2019-1444C

SECTION 1: PRODUCT DETAILS

PRODUCT NAME	Hemp-derived Cannabidiol (CBD) Tincture – MCT Oil Base, Full-Spectrum		
PRODUCT DESCRIPTION	CBD Tincture in Medium Chain Triglyceride, Full-Spectrum		
INTENDED USE	For oral consumption.		
COUNTRY OF ORIGIN	USA	LOT #	T-34019-B8
MANUFACTURE DATE	Dec 06, 2019	CBD POTENCY	34.68 mg/mL
BEST BY DATE	Dec 05, 2020	NET WEIGHT	1fl oz (30mL) per Bottle

SECTION 2: INGREDIENT AND NUTRITION INFORMATION

INGREDIENTS LIST	NUTRITION FACTS PANEL																												
<p>Ingredients: Medium Chain Triglyceride (MCT) Oil, Hemp Cannabidiol (CBD) Oil, Organic Vanilla Flavoring (organic sunflower seed oil, natural flavors). (<i>Contains <0.3% THC.</i>)</p> <p><i>Store in original container in a cool, dark place. Keep out of direct light and humidity.</i></p> <p><i>Manufactured in a facility that handles soy, salmon, anchovy, and walnuts.</i></p> <p><i>The FDA has not evaluated this product for safety or efficacy. This product is intended for oral use. This product is not intended to diagnose, treat, cure or prevent any disease.</i></p>	<div style="text-align: center;"> <h2 style="margin: 0;">Nutrition Facts</h2> <p>30 servings per container</p> <p>Serving size .2tsp (1ml)</p> <hr/> <p>Amount per serving</p> <p>Calories 10</p> <p style="text-align: right;">% Daily Value*</p> <table style="width: 100%; border-collapse: collapse;"> <tr><td style="border-top: 1px solid black;">Total Fat 1g</td><td style="text-align: right; border-top: 1px solid black;">1%</td></tr> <tr><td style="border-top: 1px solid black;">Saturated Fat 1g</td><td style="text-align: right; border-top: 1px solid black;">5%</td></tr> <tr><td style="border-top: 1px solid black;">Trans Fat --g</td><td style="border-top: 1px solid black;"></td></tr> <tr><td style="border-top: 1px solid black;">Cholesterol --mg</td><td style="text-align: right; border-top: 1px solid black;">--%</td></tr> <tr><td style="border-top: 1px solid black;">Sodium --mg</td><td style="text-align: right; border-top: 1px solid black;">--%</td></tr> <tr><td style="border-top: 1px solid black;">Total Carbohydrate --g</td><td style="text-align: right; border-top: 1px solid black;">--%</td></tr> <tr><td style="border-top: 1px solid black;">Dietary Fiber --g</td><td style="text-align: right; border-top: 1px solid black;">--%</td></tr> <tr><td style="border-top: 1px solid black;">Total Sugars --g</td><td style="border-top: 1px solid black;"></td></tr> <tr><td style="border-top: 1px solid black;">Includes --g Added Sugars</td><td style="text-align: right; border-top: 1px solid black;">--%</td></tr> <tr><td style="border-top: 1px solid black;">Protein --g</td><td style="border-top: 1px solid black;"></td></tr> <tr><td style="border-top: 1px solid black;">Vitamin D --mcg</td><td style="text-align: right; border-top: 1px solid black;">--%</td></tr> <tr><td style="border-top: 1px solid black;">Calcium --mg</td><td style="text-align: right; border-top: 1px solid black;">--%</td></tr> <tr><td style="border-top: 1px solid black;">Iron --mg</td><td style="text-align: right; border-top: 1px solid black;">--%</td></tr> <tr><td style="border-top: 1px solid black;">Potassium --mg</td><td style="text-align: right; border-top: 1px solid black;">--%</td></tr> </table> <p style="font-size: small; margin-top: 5px;">*The % Daily Value tells you how much a nutrient in a serving of food contributes to a daily diet. 2,000 calories a day is used for general nutrition advice.</p> </div>	Total Fat 1g	1%	Saturated Fat 1g	5%	Trans Fat --g		Cholesterol --mg	--%	Sodium --mg	--%	Total Carbohydrate --g	--%	Dietary Fiber --g	--%	Total Sugars --g		Includes --g Added Sugars	--%	Protein --g		Vitamin D --mcg	--%	Calcium --mg	--%	Iron --mg	--%	Potassium --mg	--%
Total Fat 1g	1%																												
Saturated Fat 1g	5%																												
Trans Fat --g																													
Cholesterol --mg	--%																												
Sodium --mg	--%																												
Total Carbohydrate --g	--%																												
Dietary Fiber --g	--%																												
Total Sugars --g																													
Includes --g Added Sugars	--%																												
Protein --g																													
Vitamin D --mcg	--%																												
Calcium --mg	--%																												
Iron --mg	--%																												
Potassium --mg	--%																												

This document is provided for documentation purposes only. The information contained herein is believed to be accurate and represents the best information currently available to Hammer Enterprises Integrated Solutions, LLC. However, Hammer Enterprises Integrated Solutions, LLC makes no warranty, expressed or implied, regarding such information, and assumes no liability resulting from its use. Users should make their own investigations to determine the information suitability for their particular purpose. If there are any questions concerning the information contained in this sheet or its applicability to a particular use, the user is instructed to contact Hammer Enterprises Integrated Solutions, LLC. Hammer Enterprises Integrated Solutions, LLC assumes no responsibility for injury from the use of the product described in this sheet in a way different from that provided in the label directions.